

Zen Design Grain

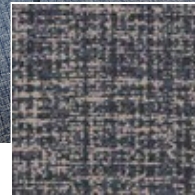
Polyamide carpet, known for its durability, can be used in any room. One of the most important advantages is the fact that the carpet fibers can stand up to a lot of wear and tear. This makes the use of nylon carpeting especially practical in areas where there is a lot of foot traffic since the synthetic fibers hold their shape longer than many other types of fibers. As a result, the pile of the polyamide carpeting looks new and fresh for many more years than other carpeting selections.

APPLICATIONS

- Bedroom
- Living Room

TECHNICAL SPECIFICATIONS

Secondary backing:	Woven Synthetic Secondary Backing
Quality code:	Z25
Manufacturing process:	Tufted
Manufacturing process (hospitality):	1/10"
Pile composition:	PA
Pile composition (hospitality):	PA
Fire behaviour:	Bfl-s1
EN 1307 Classification:	Cl. 33 Commercial Heavy



780 / Zen Design Grain / Steel



260
Camel



780
Steel



790
Midnight



840
Moonshine